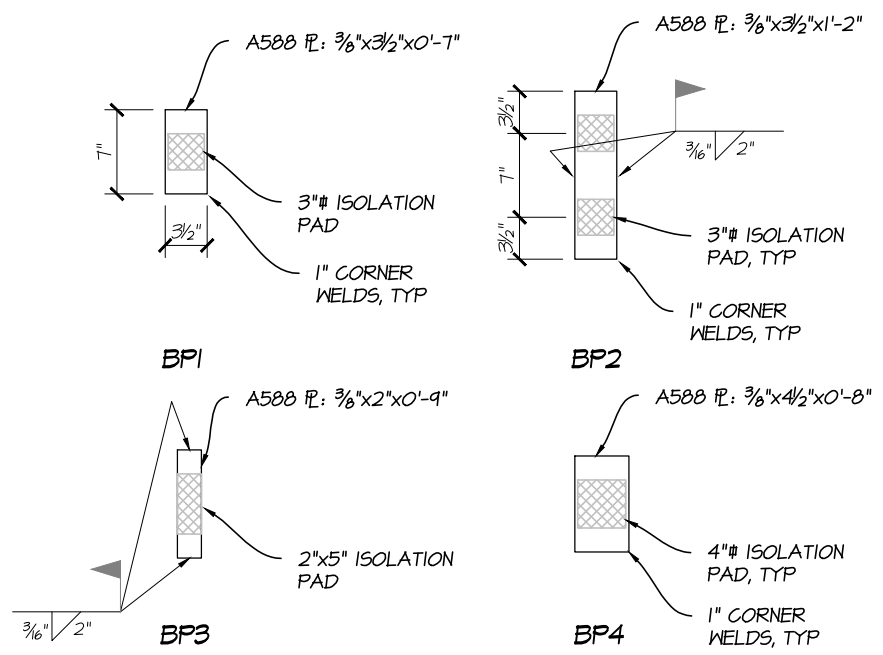
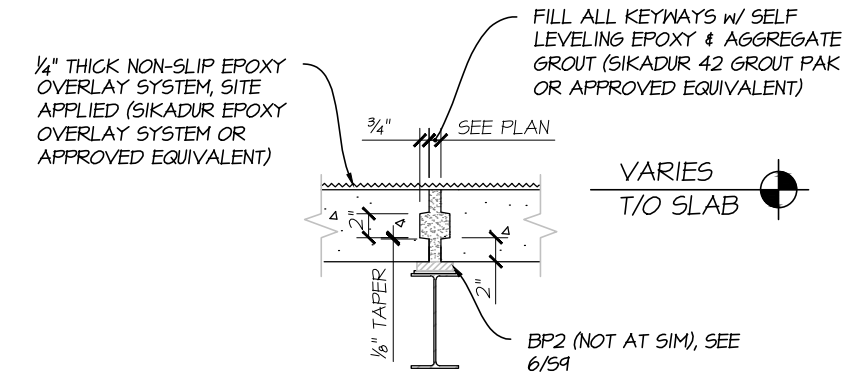


7 TYPICAL CONTRACTION JOINT
S11 SCALE: $\frac{3}{4}$ "=1'-0"

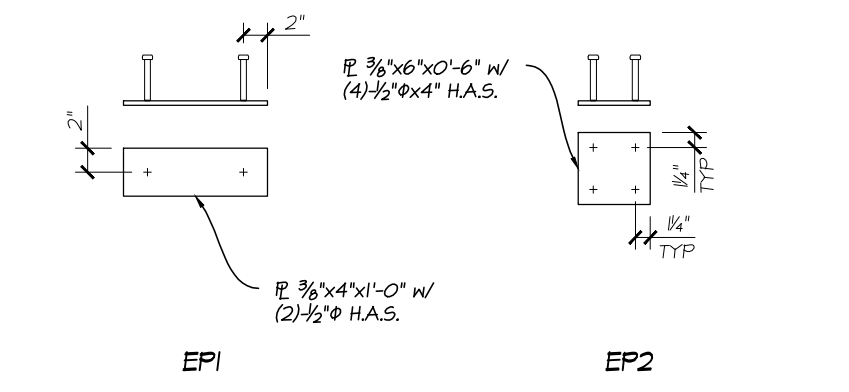


6 BEARING PAD DETAILS
S11 SCALE: $\frac{3}{4}$ "=1'-0"

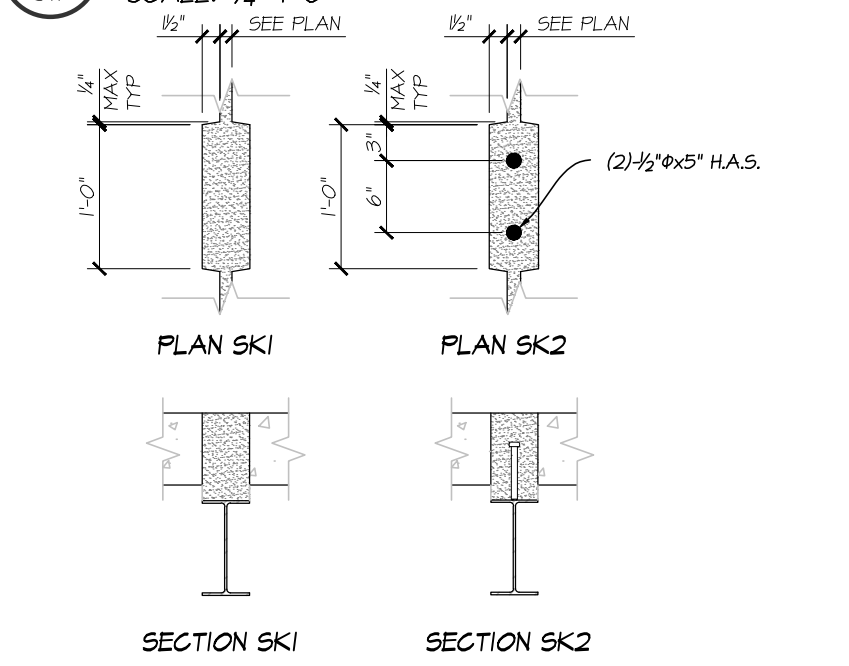
- DECK NOTES:
1. BEARING PADS SHALL BE 1" THICK MOLDED NATURAL RUBBER, CONFORMING WITH AASHTO GRADE 5 REQUIREMENTS (50 DUROMETER HARDNESS). PADS SHALL BE HOT VULCANIZED BONDED TO STEEL PLATES.
 2. GRIND ALL EXISTING SURFACES SMOOTH AT BEARING AREAS.
 3. STL BEARING PLATE TEMPERATURE AT THE RUBBER PAD SHALL NOT EXCEED 300°F AT ANY TIME DURING THE WELDING. USE $\frac{3}{16}$ " FILLET WELDS. DO NOT WARP PLATES BY EXCESSIVE WELDING.
 4. ALL BEARING PADS ARE ASSUMED TO BE SALVAGED AND ATTACHED TO EXISTING STEEL MEMBERS. THIS INFORMATION IS PROVIDED FOR REFERENCE ONLY.



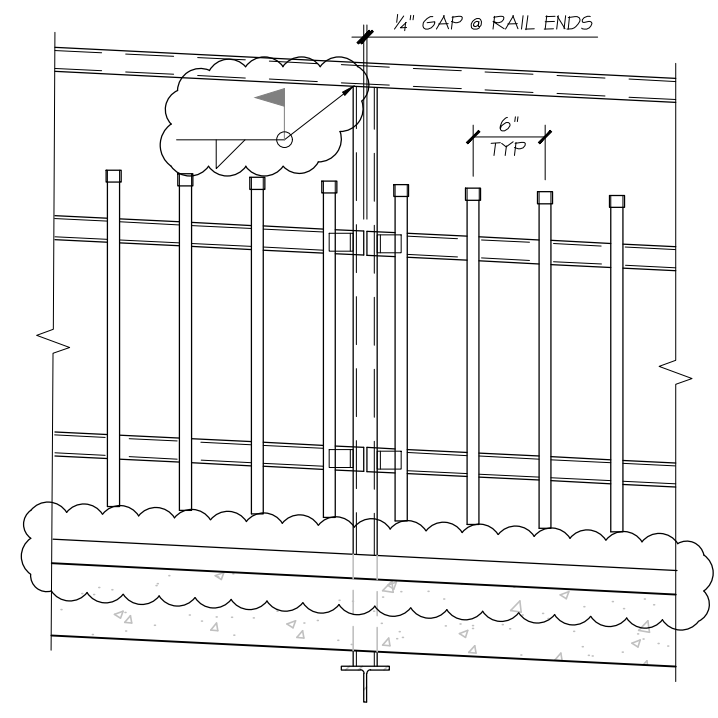
5 PANEL JOINT SECTION
S11 SCALE: $\frac{3}{4}$ "=1'-0"



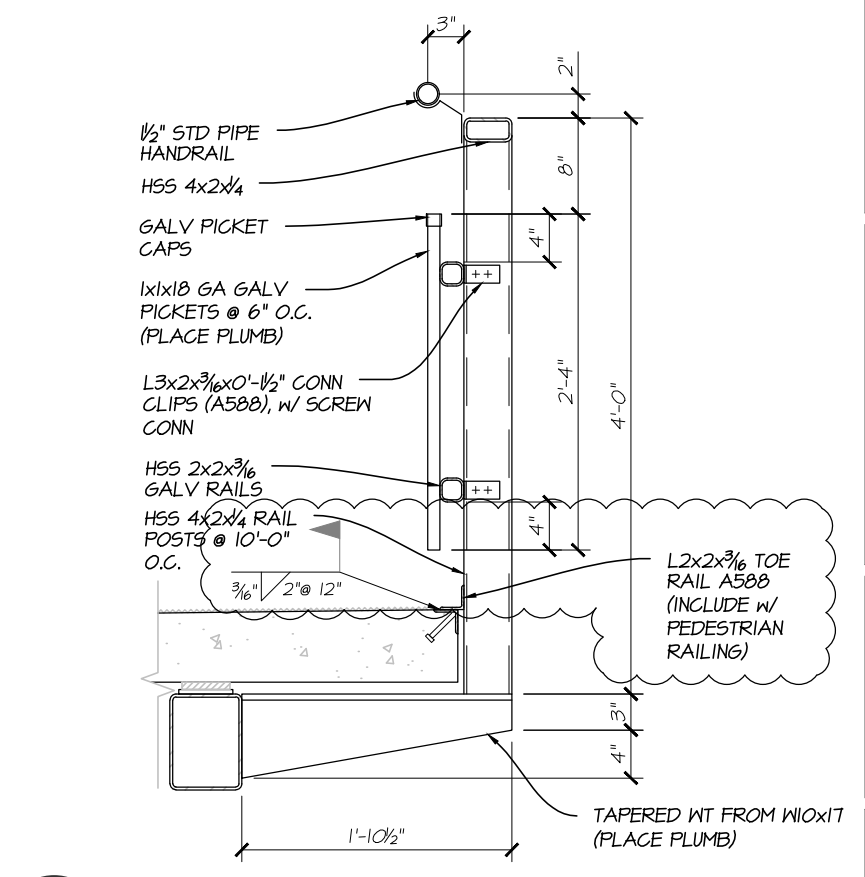
4 EMBEDMENT PLATE DETAILS
S11 SCALE: $\frac{3}{4}$ "=1'-0"



3 SHEAR KEY DETAILS
S11 SCALE: $\frac{3}{4}$ "=1'-0"



2 RIVER PEDESTRIAN TRAIL ELEVATION
S11 SCALE: $\frac{3}{4}$ "=1'-0"



1 RIVER PEDESTRIAN TRAIL SECTION
S11 SCALE: $\frac{3}{4}$ "=1'-0"

PATILLO ASSOCIATES ENGINEERS
structural consultants
1215 GRAND AVENUE, PO BOX 751
GLENWOOD SPRINGS, CO 81602
P-(970) 945-9645 F-(970) 945-4921
info@paengineers.com

ALL DRAWING INFORMATION SHALL NOT BE DUPLICATED, DISCLOSED, OR OTHERWISE USED WITHOUT THE WRITTEN CONSENT OF PATILLO ASSOCIATES ENGINEERS, INC.

GRAND AVENUE
PEDESTRIAN BRIDGE
RELOCATION
GLENWOOD SPRINGS, COLORADO

DRAWN BY: MPS
PROJECT ENG: RMP
CHECKED BY: RMP
SCALE: AS SHOWN
PROJECT #: 15076

ISSUE DATES:
6.8.2016 BID
6.23.2016 ADDENDUM 3

SHEET TITLE
PRECAST DECK
DETAILS

SHEET
S11