

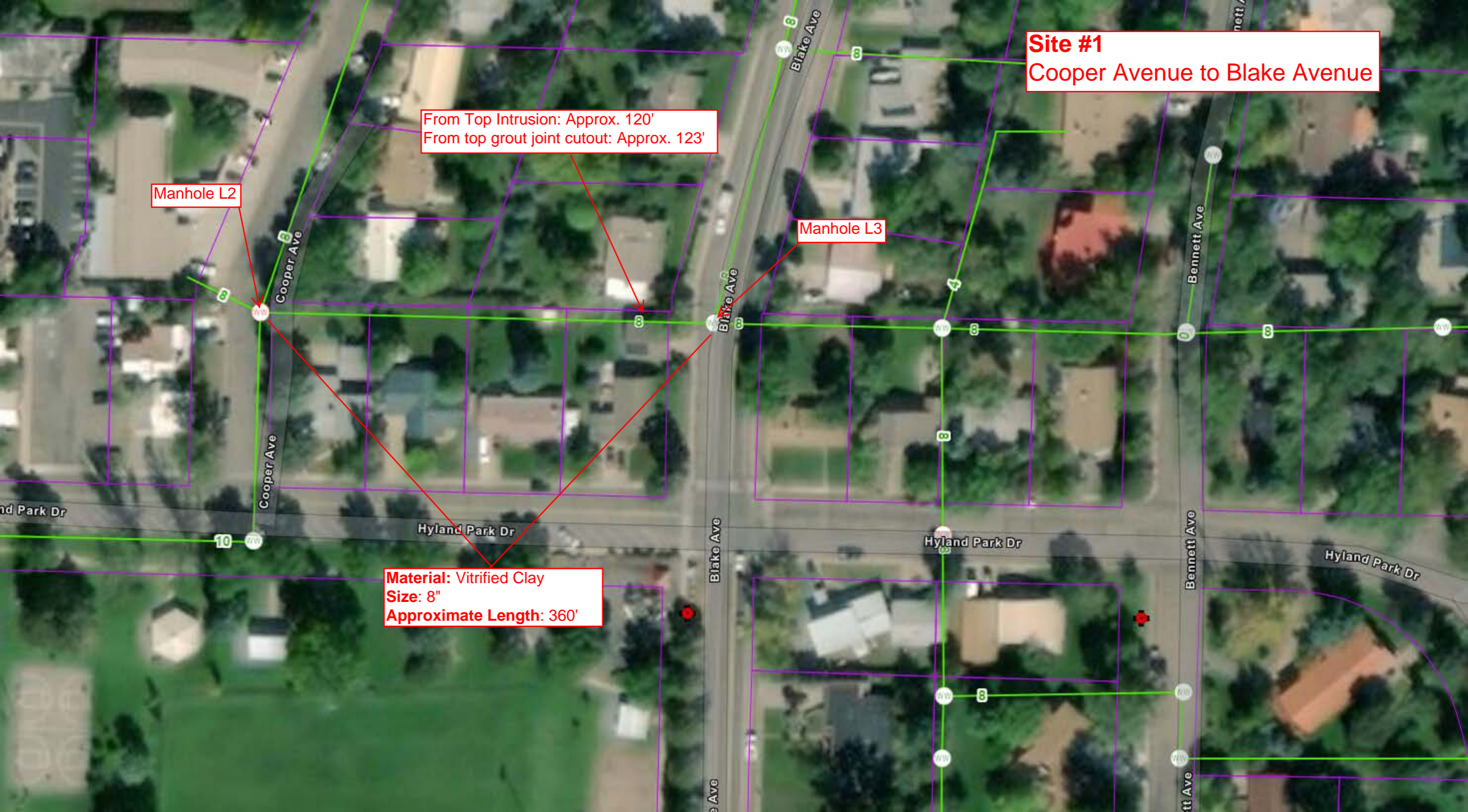
Site #1
Cooper Avenue to Blake Avenue

From Top Intrusion: Approx. 120'
From top grout joint cutout: Approx. 123'

Manhole L2

Manhole L3

Material: Vitrified Clay
Size: 8"
Approximate Length: 360'



Site 2
Hyland Park Drive to
Cooper Avenue

Manhole L2

Material: Vitrified Clay
Size: 8"
Approximate Length: 175'

From L1 to tap grindout: Approx. 100'

Manhole L1



Site 3
Hyland Park Dr. to Manhole L4

Material: Vitrified Clay
Size: 8"
Approximate Length: 168'

Manhole L4

1714 Blake manhole

