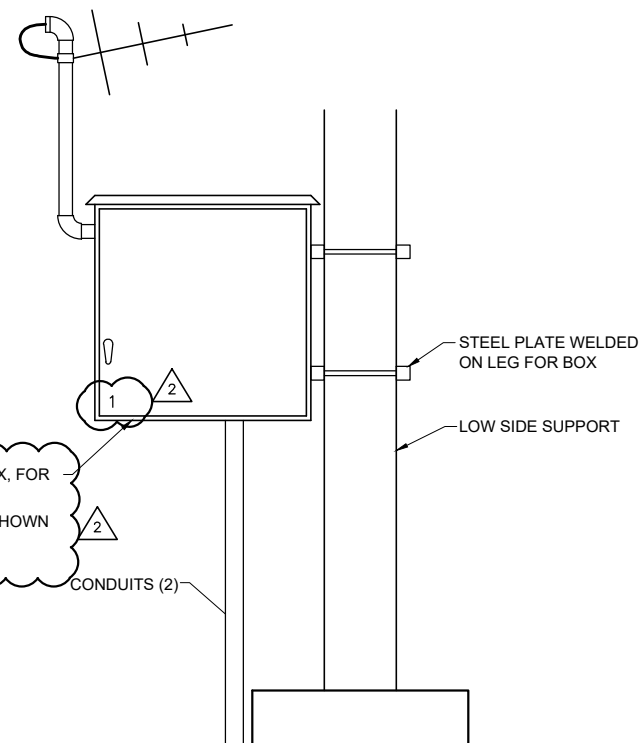


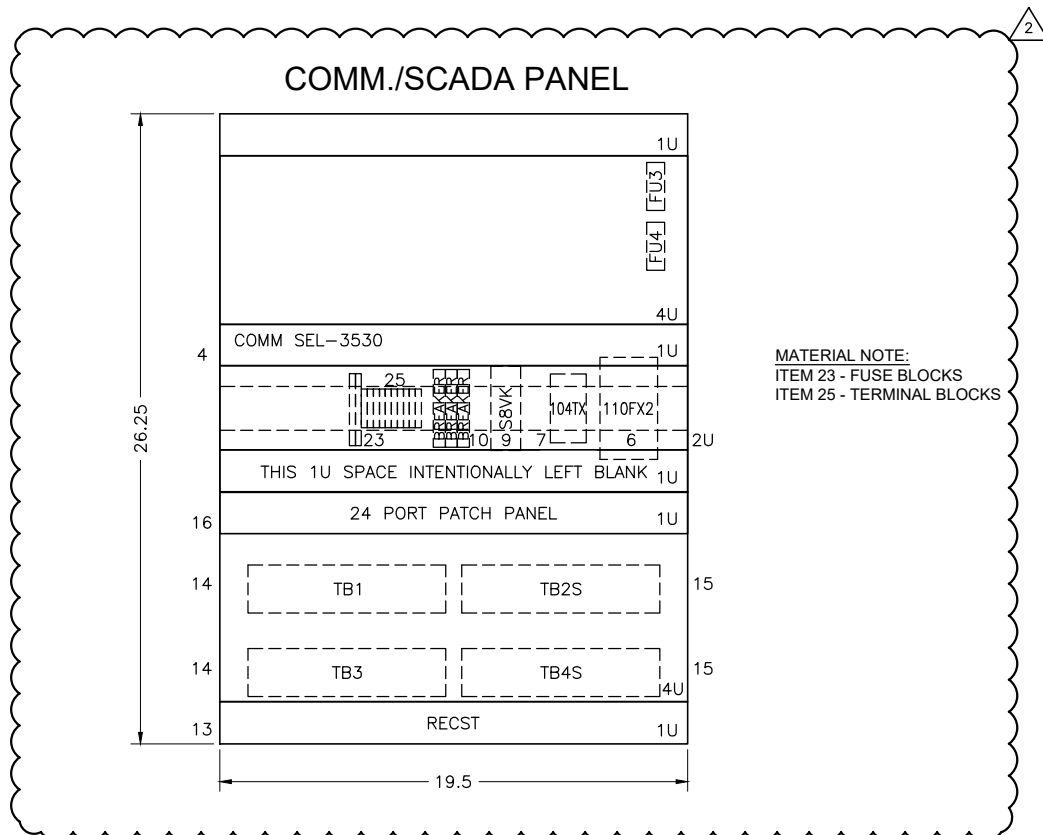
**RELEASE  
FOR BID**  
Not For Construction  
20-Jul-20

BILL OF MATERIAL					
ITEM NO.	DEVICE SYMBOL	MEGR. TYPE	STYLE OR CAT. NO.	QTY.	DESCRIPTION AND RATING
1	PANEL			1	36"x24"x10" DEEP NEMA 3R PANEL WITH INTERNAL RACK AND SWING DOOR.
2	NOT USED				
3	NOT USED				
4	COMM	SEL	35304BB0XX211X0XXXXXX	1	REAL-TIME AUTOMATION CONTROLLER, COMMUNICATIONS PROCESSOR W/4 SERIAL CONNECTIONS
5	SEL 2812	SEL	2812MRX0	2	FIBER OPTIC TRANSCEIVER WITH IRIG-B
6	110FX2	NTRON	110FX2-ST	1	UNMANAGED INDUSTRIAL NETWORK SWITCH
7	104TS	NTRON	104TX	1	UNMANAGED INDUSTRIAL ETHERNET SWITCH
8	RMAD	Hammond	RMAD19003BK	1	HAMMOND RAIL MOUNT ADAPTER, ADJUSTABLE DEPTH DIN RAIL
9	S8VK	OMRON	S8VK-G06012	1	SWITCH MODE POWER SUPPLY, 12VDC, 4.5A
10	BREAKER	AMERICAN ELECTRICAL	C10A1P-489	3	AMERICAN ELECTRICAL DIN RAIL BREAKER, UL 489 RATED
11		DDB UNLIMITED	OD-30DXC	1	15U OUTDOOR 19" DOUBLE DOOR ENCLOSURE, NEMA 4X, FLAT ALUMINUM FINISH, ALUMISHIELD, MOUNTING BRACKETS
12	HEATER	DDB UNLIMITED	HT-300	1	300W INTERNAL HEATER
13	RECST	TRIPP-LITE	RS-0615-R		6 OUTLET RACK POWER STRIP, OR APPROVED EQUAL PROVIDED IS IT SURGE PROTECTED AND INCLUDES A SWITCH
14	TB1 & TB3	GE	EB25B12	2	TERMINAL BLOCK, TYPE EB-25, 12 POLE, 600 VOLT, 30 A, #10 SCREW TERMINAL
15	TB2S & TB4S	GE	EB27B12	2	TERMINAL BLOCK, SHORTING, TYPE EB-27, 12 POLE, 600 VOLT, 30 A, #10 SCREW TERMINAL
16		CABLES TO GO	03864	1	1U 24-PORT SHIELDED PATCH PANEL
17		BELDEN	7921A	BY FOOT	BELDEN CAT5E DATA CABLE - OUTDOOR RATED AND SHIELDED
18		PANDUIT	ISTPHC0.3MYL	6	CAT5E PATCH CABLES - SHIELDED @ 1 FT
19		PANDUIT	ISTPHC0.6MYL	2	CAT5E PATCH CABLES - SHIELDED @ 2FT
20		PANDUIT	F6D2-2M1Y	3	MULTIMODE ST-ST FIBER PATCH CABLES, @ 3 FT
21	FU1, FU2, FU3, FU4	USD	H25030-2S	2 BLOCK	4-POLE, 30A, 250V FUSE BLOCK (TWO USD #H25030-2S PER BLOCK) 5 AMP FUSES W/NEUTRAL SLUG
22	NOT USED				
23	RMFU1, RMFU2	AMERICAN ELECTRICAL	ASK4LD #351729	2	24V FUSE BLOCK 1-1/4"x1/4"
24	RAIL END	AMERICAN ELECTRICAL	#495049	1	RAIL END BRACKET/COVER FOR FUSE BLOCKS
25	RTBP, RTBN	AMERICAN ELECTRICAL	#304120	10	RAIL MOUNT TERMINAL BLOCKS
26	RTXCP, RTXCN	AMERICAN ELECTRICAL	#474129	1	TERMINAL BLOCK CROSS CONNECTOR (TO BE CUT IN HALF)
27	RTBN END	AMERICAN ELECTRICAL	#444120	1	END PLATE



36"x24"x10" JUNCTION BOX, FOR MOUNTING  
26.25" X 19.5". PANEL SHOWN BELOW

ANTENNA INSTALLATION DETAIL



MATERIAL NOTE:  
ITEM 23 - FUSE BLOCKS  
ITEM 25 - TERMINAL BLOCKS

CITY OF GLENWOOD SPRINGS  
GLENWOOD SPRINGS, COLORADO

CARDNELL SUBSTATION  
COMMUNICATION AND RELAY PANEL ELEVATION

No.	Date	Drawn	Designed	Checked	Revisions	
					Proj. No.	
0	10/31/19	APG	JMB	DKD		419-821
1	06/01/20	APG	DKD	JMB		419-821
2	07/16/20	APG	CFT	JMB		419-821
3						
4						
5						
6						
7						

APPROVED BY:

JMB



FORT COLLINS COLORADO  
(970) 224-9100 ESC@THINKESC.COM

CN-W200